

POPULAR APPEAL

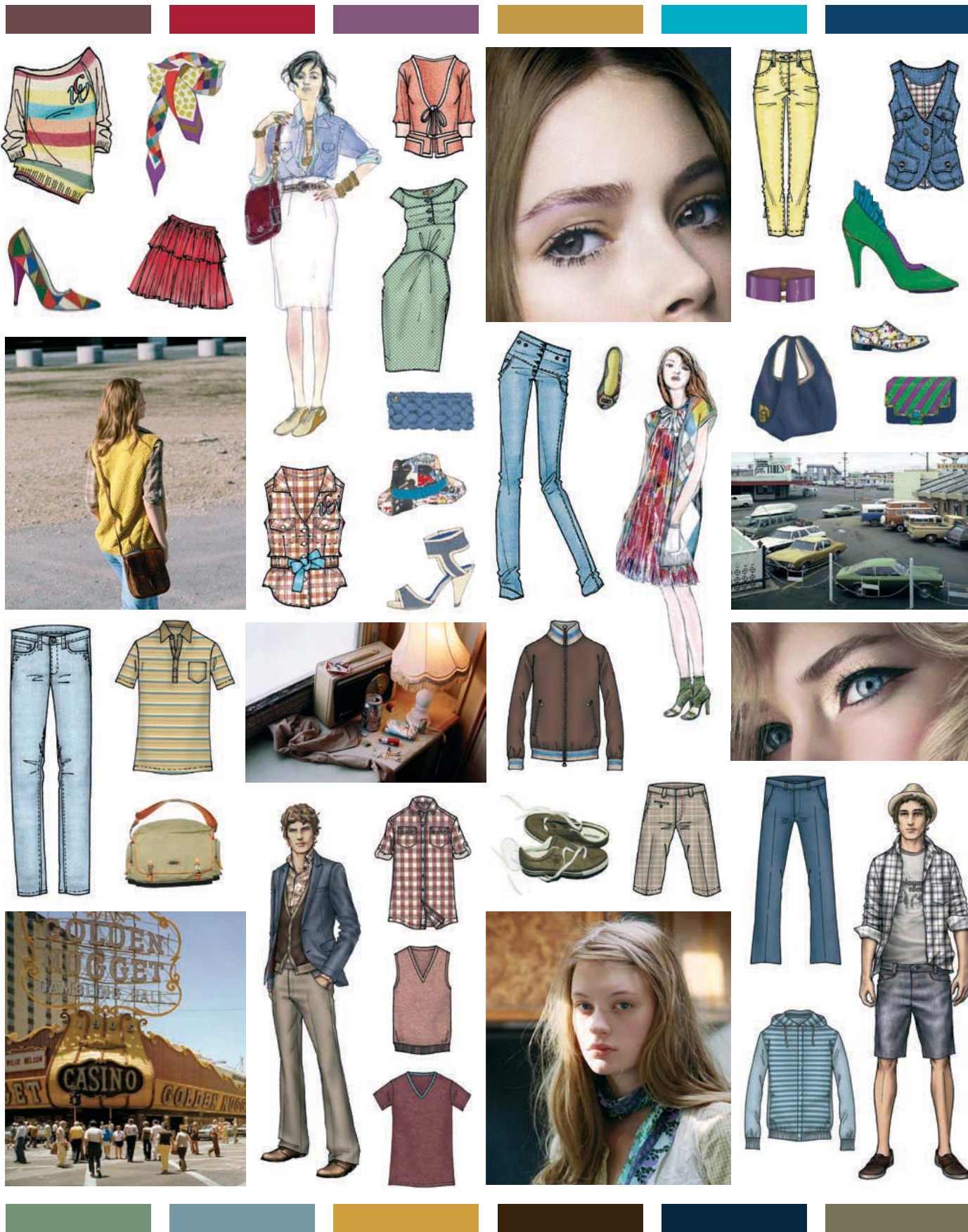
Alternatively chic and more wild. A woman-child with a retro look set in a Twin-Peaks universe. She looks like Mom and he looks like Granddad. A playful, girly mood juggling vintage patterns and faded 60's and 70's American colours creates a mundane atmosphere with a twisted angel.

Alternativt chik og mere vild. Et kvinde-barn i retro look i en form for Twin-Peaks univers. Hun ligner Mor, og han ligner Farfar. En legende, girly stemning hvor en blanding af vintage mønstre og faldede farver fra 60'erne og 70'ernes Amerika skaber hverdagsstemning med en skævt vinkel.

NellyRodi for CIFF/Spring-Summer 2010
Find complete trend description at www.ciff.dk



DANSK TEXTIL & BEKLÆDNING
CIFF
COPENHAGEN INTERNATIONAL FASHION FAIR



ODE TO NATURE

An homage to nature. Modern ceremonies, half-pagan, half-religious, which evoke the goddesses and vestal virgins of Antiquity, pre-Raphaelite paintings and symbolism. A romantic, spiritual, poetic appeal ...

En hyldest til naturen. En romantisk, spirituel, og poetisk stemning. Moderne ceremonier, halvt hedensk, halvt religiøs, kalder guderne og de vestalindske jomfruer frem fra antikens malerier og symbolik. Her er en ophøjet gudindestil med overraskende detaljer og draperinger.

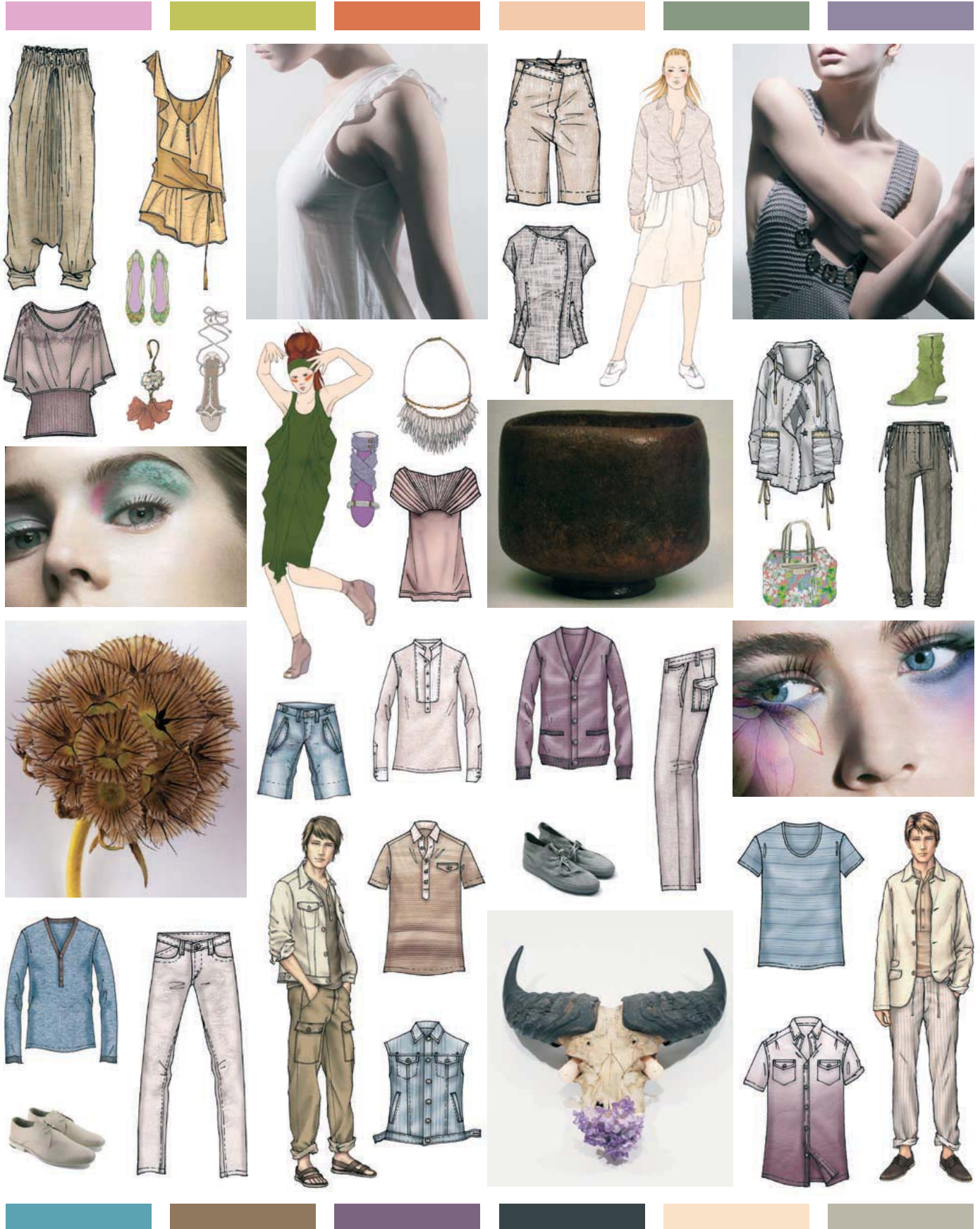
NellyRodi for CIFF/Spring-Summer 2010

Find complete trend description at www.ciff.dk



DANSK TEXTIL & BEKLÆDNING

CIFF COPENHAGEN INTERNATIONAL FASHION FAIR



LIGHT TECH

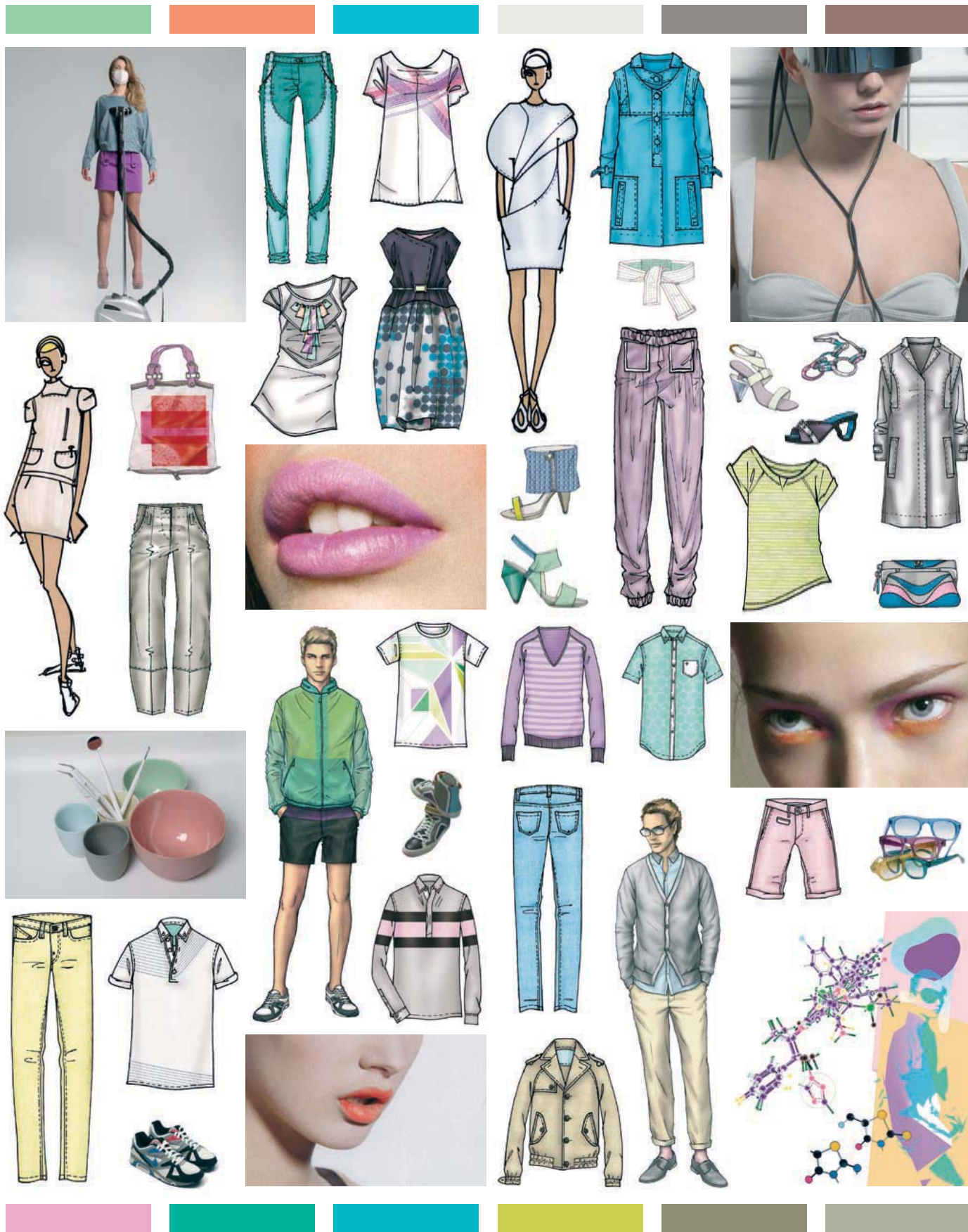
Back to the future
 A new beginning showing optimism and progress. Technology becomes playful in a sweet way. A new positive high-tech is restarting with references to the naivety of the 50ies ...

Tilbage til fremtiden
 En ny begyndelse hvor optimisme og fremgang sætter stemningen. Teknologisk og futuristisk på en sød og legesyg måde. En genstart med referencer til 50er naivitet, en ny positiv high-tech.

NellyRodi for CIFF/Spring-Summer 2010
 Find complete trend description at www.ciff.dk



DANSK TEXTIL & BEKLÆDNING
CIFF
 COPENHAGEN INTERNATIONAL FASHION FAIR



SOUTHERN FOLK

We head to South America
 A creative melting pot in a mix of influences and civilizations. From this universe, we rediscover both the appealing glamour of seductive movie actresses like Maria Felix and the humble elegance of traditional folk lore outfits.

Vi tager til Sydamerika
 - En kreativ smeltedigel af forskellige indflydelser og civilisationer. I dette univers genopdager vi både den appealingerende glamour fra forførende S/H film divaer og den mere ydmyge elegance fra traditionelle folkedragter.

NellyRodi for CIFF/Spring-Summer 2010

Find complete trend description at www.ciff.dk



DANSK TEXTIL & BEKLÆDNING
CIFF
 COPENHAGEN INTERNATIONAL FASHION FAIR

