



# TEXWORLD

Worldwide Textile Rendez-vous

22 – 25 September 2008

Paris Le Bourget, France

## UNIQUE

Colour & Fabric Trends  
Winter 09-10



messe frankfurt

# Textile sourcing system i-TEX: an exclusive Texworld Service



## Search >> Select >> Visit

i-TEX is a network based search engine for sourcing fabrics, serving design, technical and sales-orientated needs. Access is granted to Texworld visitors only for the duration of the Fair.

## For buyers

### Search

Search through potentially 10,000 fabric samples with a click of a mouse.  
Find fabrics by colour and trend themes and learn about the latest developments in fashion.  
Find fabrics that technically match exactly what you are looking for.  
Find new companies exhibiting at Texworld that can provide you with what you need.

### Select

Store all your findings in your personalized watch list and access them whenever you like during your stay at Texworld.  
Print your finding directly on site.  
Mail your findings to your handheld or your office.

### Visit

Visit the right companies out of 850 Texworld exhibitors – the ones that exactly meet your needs.

## For Texworld exhibitors

### Make yourself found!

At the forthcoming Texworld, buyers will look for the products they need in a highly complex product environment, presented by 850 exhibitors. With i-TEX we provide buyers with a new innovative tool to find and visit new suppliers that can serve their needs. You!

### Important!

We request that you send in your products samples with detailed technical information about them. On the next pages you will find Information about the latest trends for colour and fabric developments in the winter 2009-2010 season - please orientate your sample selection on this information as far as this is practicable for you.

It is possible to send in **8 samples – in A4 format (210 x 297 mm)** - and we need detailed information about each of them. Please use the Fabric Fact Form for each sample which should complete and attach to the relevant sample (e.g.: staple).

**We will accept samples until the 8 September 2008** - for samples arriving later we can't guarantee processing.

Please also send the Company Fact Form where we ask you to provide information about the performance and the potential of your company. Please send this in together with your samples.

### 1. Colour Themes

The colours for the winter Season 2009-2010 are displayed in four themes. Fabric samples representing each theme will be displayed briefly at the exhibition. In-depth information can be found in i-TEX.

### 2. Segment Themes

For the following 7 main segments we provide a brief overview of what is important for winter 2009-2010: Silk, Embroidery & Lace, Knitwear, Cotton, Wool, Prints and Functional Fabrics. Fabric Samples representing each segment will be displayed in the corresponding area at the exhibition. In-depth information about each segment trend can be found in i-TEX.

### 3. Season Highlights

General important fabric developments will be presented here. Each represented by selected fabric samples only within the i-TEX database system.

# UNIQUE

## Colour & Fabric Trends Winter 09-10

The quality of uniqueness, distinctiveness is what makes characters something special. Today, people increasingly manage more to express and communicate their individuality via the new media. Styles are reflected in a multitude of facets in their wardrobes. The search for something special leads to a reassessment of materiality. Hand-crafted excellence, innovative technology, original visuals and exceptional handles make fabrics unique. Emotional colour contrasts and eccentric motifs fill us with astonishment. They give magic back to fashion. In this connection, the fabrics gain their inspiration from nature and either quote minerals, woods, furs and feathers or orientate themselves on the urban graphics of modern art and graffiti. Hand-crafted quality and high-tech work hand-in-hand to create fabrics which combine ultra-modern performance with the necessary human touch.





# 01 - Colours

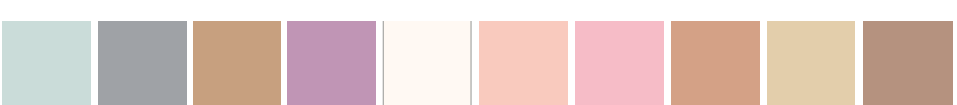
## 1 - Realistic

Urban rationality and the search for the perfect look leave their stamp on a cool, rational atmosphere. Quiet Neutrals reflect mineral structures. Diffuse metallic reflexes provide a modern gloss. Fabrics are fine-threaded and compact. Doubles, sandwich weaves and ultra-thick technics shape the silhouettes. Graphic patterns have a softer look and larger repeats. Silk and Jersey provide a feminine contrast. Crystals, shimmering metal and varnish ornaments provide spectacular deco effects.



## 2 - Sensitive

Nature inspires a rich, soft materiality. Like the precious fullness of furs, high-quality fabric volumes create a cosy feel. Brightly warm nuances and dusty tones provide the basis for tone-in-tone looks with strong surface contrasts. Pastel-like accents stand for femininity. Hairy overcoat qualities are declined via light flannels to semi-transparent crêpes. A strong focus is put on melange optics and colour shadings. Velvets sensitively translate soft pastels. Lace and dévorés stage seductive fancies.





## 01 - Colours

### 3 - Magical

Mysterious forests are full of surprising creatures. The feathers of the birds, the markings of the furs play with a palette of warm brown and vegetal green tones. Authentic materiality breathes an expressive casual spirit. Organic cotton and eco- friendly qualities have a high priority. Full cottons with structures and worker denim provide a contrast to milled and velour optics. Checks celebrate a real comeback from tartans right through to Canadienne checks with an ombre effect. Prints redefine animal motives in complex fashion.



## 4 - Expressive

In the age of networking, sampling cultures and artistic influences is simply child's play. Folk, hippie and arty worlds flow into each other. With multicoloured stimulation, the colour series lives from powerful impulses. Unusual associations of cold/warm contrasts produce tension and new colour sounds. Multicoloured tweeds and colourful checks provide coloured fabrics with a new rhythm. Recycled yarns generate random effects. Folk and neo-hippie prints show their colours. Ultra-lightweight technics and coloured denims stand for sportsmanship.





# 02- Segment Information

## 1 - Silk

The subtle and emotional colour ranges of the season are perfectly displayed in the elegant shimmer of silk. Instead of shiny high gloss, duller surfaces are more important. The fabrics range from flowing satin and silk jerseys right through to silk velvets and multi-layered sandwich weaves. In sporty or woolly interpretations silk even has chances in the casual segment.

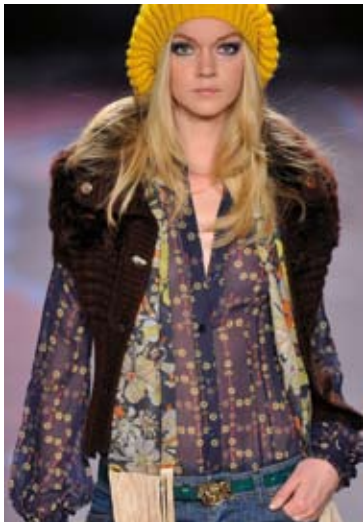


### Key Items

- Cloqués
- Silk twill
- Silk velvet
- Pannesamt-Dévorés
- Second skin velours
- Changeants
- Fortuny + Multi-Plissee
- Matelassés
- Sandwich weaves
- Chiné effects
- Silk tweeds
- Oxide metallics
- Crystal brilliance

## 2 - Prints

After the print euphoria of the summer, prints continue to be a key item. Discreet floral cotton prints are reminiscent of the dresses of the American pioneers. Mineral and vegetal structures create informal patterns which work with «Flou» and used effects. Eastern folklore supplies multicoloured optimistic inspirations in the style of world culture. Here, folk and arty influences flow creatively and provocatively together.

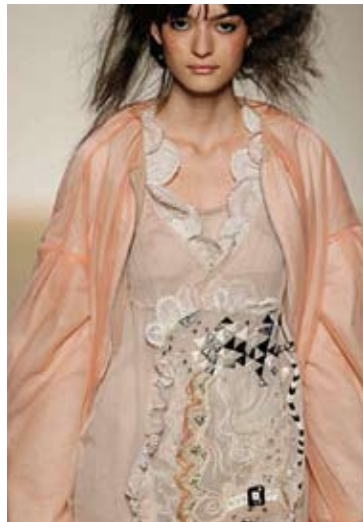


### Key Items

- Mineral grains
- Marble effects
- Wood, feather + animal motifs
- “Old” effects
- Top-dyeing and flock make contrasts softer
- Cashmere prints
- Calligraphy
- Folk motifs + arty motifs (Mongolia, Tibet, Inuit)

## 3 - Embroideries, Laces

Femininity and sophistication make filigree lace and embroidery the eye-catcher. Complex and precious, decoration nevertheless remains restrained. Free structural patterns are inspired by the form language of enchanted forests. Hairy, woolly yarns communicate authenticity, oxidized metallics the feminine elegance of the turn of the century.



### Key Items

- Broderie Anglaise
- Richelieu embroidery
- Chantilly lace
- Vegetal structures
- Fur + feather structures
- Gathering + fragile multi-layered structures
- Tapisserie Jacquards
- Sequined embroidery
- Crystal effects
- Lacquer finish
- Arty motifs

## 4 - Knitwear

Lightweight, fine knitted fabrics continue to determine the main line. They make wider silhouettes possible and modern layers. Authentic, irregular and melanged to tweedy yarns are inspired by nature. Extreme yarn volumes for fashion statements. Compact volumes in doubles and milled qualities create clear silhouettes.



### Key Items

- Second Skin
- Animal + vegetal blends WO/LI, WO/SE, CO/WO
- Hairy, furry yarns
- Thick/thin effects
- Doubleface
- Yarn volumes
- Open knits
- Melange + mouliné yarns
- Elegant milled finishes
- Crystal + silk gloss
- Oxide metallics
- Multicolour effects

# 02- Segment Information

## 5 - Cotton

Cotton remains fine and in a high density is sophisticated. Satins and twill structures permit modern technicality with PES or PA. Velvet-finished surfaces create wintry volumes. Authentic Cottons favour coarser looks which with malfilé effects and patina colourings create a casual attitude. Coloured woven cottons extend from wool inspirations to the most diverse checks.



- Key Items**
- Melange effects
  - Mouliné or Jaspé effects
  - Compact military twills
  - Heavy velvet
  - Malfilé canvas
  - Organic cotton
  - Retro stripes
  - Fine glen checks
  - Country checks
  - Asphalt + colour-coating
  - Colour denim
  - Dark ground + club stripes

## 6 - Wool

Wool enters luxurious combinations with fine quality hairs. Hairy volumes, bouclés and ultra-soft finishes display added value. Crêpes and technical wools convince with their modernity. Compact uniform fabrics and doubles contour silhouettes. Authentic wools extend from flannels to distinctive tweeds or Shetlands. Checks in Tartan and Canadienne looks are regarded as key visuals. Wool forms athletic combinations with linen and cotton.



- Key Items**
- Bouclés
  - Mohair, alpaca, angora
  - Hairy coat
  - Wintery Giro Inglese
  - Doubleface
  - Tartans
  - Canadienne checks
  - Military fabrics
  - Multicolour tweed
  - Retrosuit optic
  - Clean micro-patterns
  - Pin stripes

## 7 - Functional Fabrics

Full Shape Memories and extremely dense technics provide for clear lines. Ultra-light nylons make matelassés functional. Melange looks and duller finishes remove the unapproachableness from Technics. Coatings and changeants reflect oxidized titanium, copper and bronze shades. Techno doubles combine natural layers with function.



- Key Items**
- Ultralight technics
  - Copper + bronze changeants
  - Strata PA
  - Shape Memory
  - Nylon uniform twill
  - Neoprene
  - Velvet finish
  - Asphalt finish
  - Rubber coatings
  - Bondings nature + technic
  - CO/Nylon blends
  - Recycled PES
  - Leather + dust coating



# 03 - Season highlights

## 1 - Sensual



- Hairy wool
- Luxury milled qualities
- Cashmere/angora/ alpaca blends
- Bouclés
- Liquid wool
- Giro Inglese
- Knit optic
- Silk tweeds
- Multi-layered chiffons

## 2 - Mineral



- Dusty shades
- Grey to grey
- Flannel
- Faded pattern
- Chalk stripes
- Ombré effects
- 3D reliefs
- Marble effect

## 5 - Folk Fantasy



- Cashmere prints
- Russian folk
- Multicolour tweed
- Lambskin
- Leather
- Velours
- Cord
- Felt applications
- Puzzle prints
- Folk meets arty prints

## 6 - Precious



- Pannesamt
- Chiffon
- Satin
- Sequined embroidery
- Crystal reflex
- Lacquer prints
- Matelassé quilted
- Fortuny plisse
- Klimt prints

## 3 - Savage



- Organic
- Vegetal dye
- Shetlands
- Wool + linen, CO/WO
- Colour denim
- Worker denim
- Natural irregularity
- Double-dyed cottons
- Lana Cotta
- Shrunken wool
- Natural cloqués
- Fur optic
- Animal prints

## 4 - Checked



- Naive small checks
- Country checks
- Canadienne checks
- Tartans
- Print or jacquards on checks
- Eccentric checks
- Relief effects

## 7 - Androgynous



- Uniform fabric
- Multi-crêpe
- Heavy twills
- Tricotine
- Pin stripes
- Club stripes
- White shirt
- Micro-pattern
- Fineliner stripes
- Techno finishes



**Messe Frankfurt France S.A.S**

1, avenue de Flandre

F - 75019 Paris

Tel. +33 155 268 989

Fax +33 140 350 900

[texworld@france.messefrankfurt.com](mailto:texworld@france.messefrankfurt.com)

[www.texworld.messefrankfurt.com](http://www.texworld.messefrankfurt.com)



Subject to change, as of 06/2008. Printed in France 20/06/2008. GB.