

# NILIT<sup>®</sup> TRENDBOOK

BodyFashion & Active-Sports. Spring - Summer 2011



**NILIT<sup>®</sup>Fibers**

# WHATEVER THE TIME AND WHEREVER YOU ARE IN THE WORLD

## NILIT® YARNS OPEN NEW VISTAS BLENDING TECHNOLOGY AND ECOLOGY IN PERFECT HARMONY WITH THE ENVIRONMENT

Faced with a world of uncertainty and instability, Bodyfashion and Activewear mirror a society seeking ways to live a better life in a new mood sparked by a quest for meaning. The Summer 2011 consumer will know how to combine two seemingly opposing worlds: on the one hand, one of purity and spirituality and on the other hand a need for ornamentation and sensuality. These two contradictory aesthetics are confronted as we define Bodywear trends for Spring-Summer 2011.

For Bodywear, the search for authenticity manifests itself in the quest for a different consumerism. This season reconciles ecology and technology and lends a zest to creativity. Personal expression goes hand in hand with aspirations of style and the search for added value. The closer interaction between science and aesthetics is part of the broader eco design philosophy, now on sound ground for the future that we aspire to.

Activewear reflects that the world of sport no longer focuses only on physical prowess. It encompasses ecological and spiritual considerations where performance aspires to a broader vision of the world and the environment.

At NILIT®, consideration for the environment is at the cornerstone of our business and we have engineered our operations to produce some of the best nylons in the world in the most eco-friendly manner possible. NILIT® EcoCare recycled yarns reflect our philosophy and are a breakthrough in yarn engineering and production. Innovation is the key at NILIT® and our unique and diverse products continue to open new vistas creating a new generation of state-of-the-art products that are both at the cutting-edge of fashion and in perfect harmony with the environment.



TACTEL® fiber, SUPPLEX® fabric, and CORDURA® fabric are registered trademarks of INVISTA and are used under license to NILIT for nylon products.



12:00  
Quito



24:00  
Milano



15:00  
New York



06:00  
Windhoek



19:00  
London



21:00  
Barcelona

A woman with long dark hair in two braids, wearing a light blue tank top, white shorts, and blue socks, is sitting cross-legged on a wooden suspension bridge. She is smiling and looking upwards and to the right. The bridge has green safety netting on both sides. The background is a dense, green forest. In the top left corner, there is a circular graphic with a dashed border containing the text '12:00' and 'Quito'. At the bottom, there is a line of text: 'Discover your heritage and explore earth's treasures'.

12:00

Quito

Discover your heritage and  
explore earth's treasures



# ethnic fusion

**This season, lingerie rediscovers ethnic ornamentation**

expressed in a multi-cultural trend inspired by faraway lands and the riches abundant in nature. Native American landscapes, rugged deserts and African safaris provide the backdrop in which traditional tribal influences and indigenous handcrafts are blended.

**Natural handles dominate**, resembling rough textures of

cracked earth, animal hides, grass and bark. Filigree meshes combine with crackly crepes and accentuated matte surfaces in natural tones. Sensual bodywear is adorned with abstract animal prints and jacquards of leaf motifs creating relief effects.

**An intense and vibrant color palette** features vivid folkloric

combinations accented with touches of burnished metal. Hues of patina are contrasted with warm accents of terracotta and tints of ochre, azure blue and green. Rich browns and the colors of nature combine with subtle beiges and faded chalk tones.

**Lingerie will be both sensual and romantic** featuring draped

sarongs and off-the-shoulder looks with ethnic style. Laced corset cuts emphasize the waist, and fancy needlework details adorn ultra low-waist panties and demicup bras. Multicolored appliqués of naïve embroideries add richness to ultra feminine lingerie.

# western trail

Create rich tone-to-tone effects on the Western Trail with NILIT® Colorwise yarn.

17-4716

19-4241

17-1532

14-1230

12-0626

17-6323

18-1130

15-1046



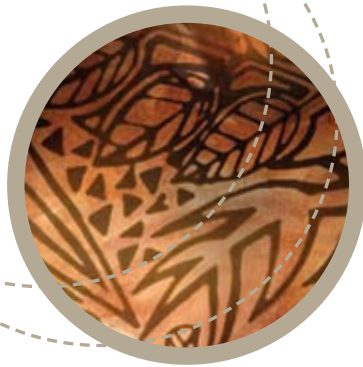
Sensuous bodywear is accented with hand-crafted stitching inspired by embossed leather boots and the Wild West.

## yarn c'lose-up

The tone-to-tone embossed effect is created from NILIT® Microsilk Semi-Dull yarn and NILIT® Colorwise yarn.

# savanna lands

NILIT® Pastelle and NILIT® Colorwise yarns create bodywear inspired by Savanna Lands.



A dream of African forests and endless plains inspire the scattered leaf design in earth colors.

## γarn c'lose-up

The natural two-tone effect is achieved by knitting NILIT® Pastelle and NILIT® Colorwise yarns with bare spandex.

# tribal crafts

The feel of authentic tribal crafts with a natural touch is created from NILIT® EcoCare yarn.



Hand-crocheted effects with an authentic cottony touch contour the body and dramatically emphasize its curves.

## yarn close-up

The natural soft handle is created from NILIT® EcoCare yarn and covered spandex.



# heritage


Rich earth colors in deep tones are created from NILIT® Microsilik and NILIT® Pastelle yarns.



Native American patterns and naïve pottery designs add seamless accents to off-the-shoulder necklines with romantic ethnic style.

## yarn close-up

The sensational multi-colored melange effect is achieved by knitting NILIT® Microsilik Semi-Dull and NILIT® Arafelle yarns together with spandex covered with NILIT® Pastelle yarn.



24:00

Milano

Free your spirit and envelope  
magic and mystery



# Dark fables

**An atmosphere of mystery, magic and the occult** expresses itself in a neo-Baroque spirit. A mood of fantasy inspires a glamorous haute couture style with a contemporary interpretation of mythology. This daring and sensuous theme focuses on body-fitted shapes made from ultra-sophisticated fabrics featuring extravagant and poetic details.

**Fabrics that are precious and sumptuous** are adorned with swirling baroque patterns and romantic flowers. The timeless elegance of satin, damask and transparent voile in smoky shades conveys a look that is both sensuous and luxurious. Dramatic bodywear is created from jacquards inspired by sumptuous furnishings and elaborate laces.

**A dramatic color palette features intense and decadent tones** of burgundy and dramatic black which contrast with shades of immodest pink and a touch of bronze. Fabrics with tone-to-tone relief effects are contrasted with warm accents of antique rose, powder pink and violet to add richness to ultra feminine lingerie.

**Elaborate and sophisticated vintage-style corsets emphasize the waist** and are made irresistibly feminine with Venetian lace and other flirty details. Shapewear provides support without sacrificing sensuality. Legwear steals the scene with extravagant Baroque designs, ornamental scrolls and stylized arabesques motifs.

# Baroque Allure

Dramatic bright satin with Baroque Allure is created from NILIT® Britex yarn.

15-4502

17-0205

19-4030

19-1629

17-1831

17-3925

14-4504

11-0809



Romantic shapewear is interpreted with lyrical baroque patterns decorated with corded effects.

## yarn close-up

The luxurious contrasting shiny and matte effect is created from NILIT® Britex and NILIT® Microsilk Super-Dull yarn and spandex covered with NILIT® Colorwise fiber.

# Mystic Legend

Seductive two-tone effects create a message of glamorous finery using NILIT® Colorwise yarn.



Romantic finery is interpreted in a seamless positive/negative floral design with luxurious ornamentation.

## yarn close-up

The dramatic two-tone effect is created from NILIT® Microsilk Super-Dull yarn and NILIT® Colorwise yarn and bare spandex.

# wicked ways

Elegant bodywear inspired by the spirit of haute couture is created from NILIT® Brillion yarn.



Bodywear under the spell of lace has an elegant draped effect reminiscent of past grandeur.

## yarn close-up

The glamorous lace effect is created from NILIT® Brillion and covered spandex.

# Art Nouveau

Support garments with a look of opulence and sophistication are created from NILIT® Brillion yarn.

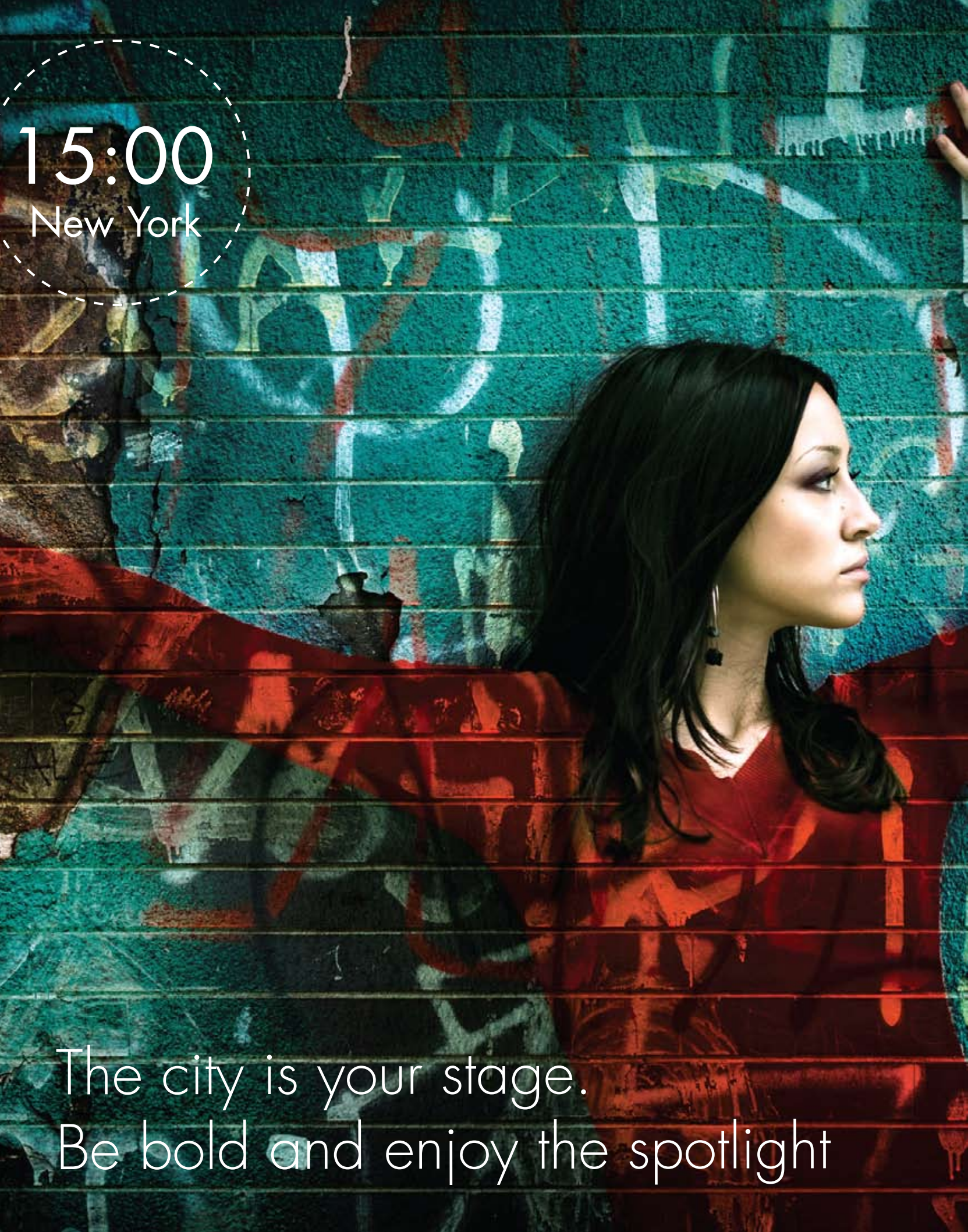


Sensuous retro bodywear with contrasting matte and shine effects is styled with a contemporary twist.

## yarn close-up

The glorious shine and sheer effect is achieved using NILIT® Brillion and spandex covered with NILIT® Eversheer yarn.





15:00

New York

The city is your stage.  
Be bold and enjoy the spotlight





# Urban Graphics

**Urban influences inspire bodywear that is a radical breakaway** from the mainstream. Worn with rebellious attitude this daring streetwear style is based on a fusion of glamorous grunge aesthetics, graphic motifs, and recycled urban elements. Cool and trendy, the junior market takes its inspiration from the street by wearing modern assertive cuts and strikingly mismatched combinations.

**This ultra-trendy collection is emphasized** by a color range of deep tones of Indian ink, dark teal and mineral gray which contrasts with the energy of ultra-bright silver with sophisticated shine. Black contrasts with touches of brilliant orange and flashes of saturated neon colors. Ultra-daring prints combine with color splashes and graffiti.

**Unusual fabric treatments and lacquered surfaces** are accented with subtle sparkle, burn-outs, raw edges and hazy transparency. Netting and mesh are animated with micro-geometric patterns. Dense slinky metallic knits contrast with the dry and compact handle of mélange effects created from NILIT® Arafelle yarns.

**A contemporary collection of impertinent, seductive little pieces** consists of mismatched contradictory elements. Silhouettes feature a magnificent mix of fabrics and an explosive look of incongruous combinations. Tatty lace is combined with open knits while bold meshes are accessorized with metallic chains and zippers. Playful legwear is a key item.

# Heavy Metal

The shine of heavy metal is created from NILIT® Brillion yarns.

18-1655

15-4305

19-4026

16-4411

18-6024

13-0752

16-4127

16-1640



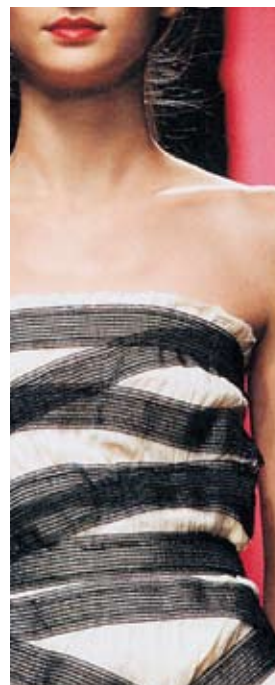
Sharp-edged geometric designs feature solid patches which contrast with mesh panels to create bold corsetry looks.

## Yarn close-up

Dramatic effects of contrasting mesh and solid panels are created by combining NILIT® Brillion and covered spandex.

# Street Signs

Create street signs with heathered effects by using NILIT® Arafelle yarns.



Seamless streetwear that is corsetry-inspired is made in heathery tones and contrast lace-up effects.

## Yarn close-up

Sensational mélangé effects are created by combining NILIT® Arafelle yarn and spandex covered with NILIT® Pastelle yarn.

# Writing on the Wall

The writing is on the wall with stunning tone-to-tone graffiti designs made from NILIT® Colorwise yarn.



Underwear/outerwear with offbeat graphic effects is worn to be seen.

## Yarn close-up

Dramatic tone-to-tone effects in the streetwear spirit are created from NILIT® Pastelle yarn and NILIT® Colorwise yarn and bare spandex.

# Free Spirit

Be a free spirit and create multi-colored patterns from NILIT® Microsilk Semi-Dull yarn and NILIT® Pastelle yarn.



Exuberant junior bodywear is a glorious combination of mix-and-mismatched patterns of flowers, stripes and plaid.

## Yarn close-up

The dramatic contrast effects are created by combining NILIT® Microsilk Semi-Dull yarn and spandex covered with NILIT® Pastelle yarn.



06:00

Windhoek

Connect with nature & decide  
where the day will take you



# Discovery

**This trend emphasizes the desire to leave behind all constricting social anchors to live a healthy life** and search for balance and wellbeing. Sports activities are in touch with nature and inspire a nomadic spirit. The need for authenticity continues to stimulate the imagination, mixed with fantasies of discovering lost worlds and the challenge of outdoor adventures of hiking and climbing.

**The quest for performance for outdoor wear translates into garments with a high degree of comfort and supportive shaping.** Seamless knitting technology creates shapes that are closer to the body for a more fitted silhouette, and design focuses on protection and safety. Sophisticated ergonomic cuts integrate protective patches on the elbows and knees.

**Body and soul embrace the values of serenity and well-being** expressed in easy-to-wear coordinating yoga garments. Fabrics with a cottony touch and tactile appeal boast the essential qualities of softness and fluidity. The focus is on products with simple shapes made for comfort that blur the line between ready-to-wear and activewear.

**For outdoor action, garments are infused with an energetic color palette** of sharp bright tones in vivid combinations. Bleached bright colors of ocean blue and Amazon green work alongside heather grey and charcoal created from NILIT® Arafelle yarn. Dramatic multi-colored effects are achieved with the NILIT® World of Color concept which creates two distinct colors in one dyeing process.

# Shanti

For yoga wear with a natural touch, harmonious tonal effects are created by using NILIT® EcoCare recycled yarn.

17-1532

14-1230

17-4716

16-4411

16-1334

18-0538

19-4241

16-1364



Ethnic motifs and wrapped layers team up for a coordinating yoga story.

## Yarn close-up

The soft handle and tone-to-tone effects are created from NILIT® EcoCare recycled yarns in two dtexes.



# Adventure

Activewear made from CORDURA® brand fabric will help protect you against the elements.



Equip yourself for outdoor adventures with a layer of protection that is both comfortable and durable.

## Yarn close-up

Sophisticated hiking wear boasts supportive panels and reinforcement patches. The top is created with NILIT® Bodyfresh yarns in two weights and tough, durable CORDURA® fabric for the shoulder patches. The pants are made from CORDURA® fabric and spandex covered with NILIT® Bodyfresh.

CORDURA® fabric is a registered trademark of INVISTA and is used under license to NILIT for nylon fabric products



# Go the Distance

Reach the winning post wearing comfortable activewear created using NILIT® Super Microfiber.



For running and training gear, seamless bodywear provides outstanding support and control.

## Yarn close-up

The smooth sensation is achieved from NILIT® Super Microfiber and spandex covered with TACTEL® soft black fiber.

TACTEL® fiber is a registered trademark of INVISTA and is used under license to NILIT for nylon fiber products.



# Peak Performance

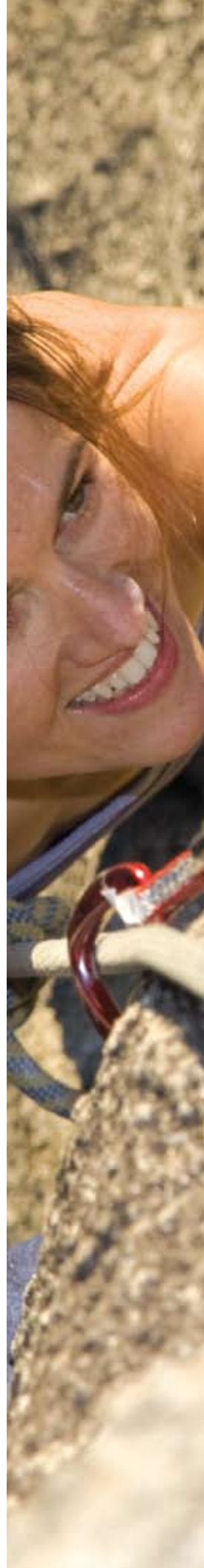
Aim high and reach the summit in supportive gear made from NILIT® Aquarius yarn.



To achieve peak performance, the focus is on fabrics which provide resistance, support and moisture management.

## Yarn close-up

The essential protective qualities and color variety are created from NILIT® Aquarius and NILIT® Pastelle yarns and spandex covered with NILIT® Colorwise yarn.



19:00  
London



Aim high and play the game  
with power and confidence



# EXCELLENCE

**This trend focuses on a drive to achieve excellence** while displaying a noble attitude during competitive sports. The accent is on comfort and sophisticated fabrics which offer functionality and essential support for multiple sports, while combining the best of technology and cutting-edge design.

**Garments emphasize form and are designed like carved armor fitted on the body**, while featuring elaborate ergonomic cuts and ornamental detailing. Team sports, fitness training and running gear feature styles accented with a play of lines and placed geometric shapes.

**Trail running continues to seduce the tireless adventurer** and urban jogger who seek the best of technology and easy-care properties to guarantee performance and resilience. NILIT® Aquarius yarn ensures moisture management which remains effective even after repeated washings.

**The women's activewear market moves away from girly styles** in favor of sophisticated "combat" looks which combine protection, resistance and support. High-tech functional garments must be extremely flexible and guarantee optimal temperature regulation. Seamless knitting integrates reinforced support panels which minimize pressure points.

# PRO COACH

Be a professional and ensure optimal performance using NILIT® Aquarius yarn.

18-1531

15-4305

13-0752

13-6006

19-0608

18-6024

18-0538

18-1655



TACTEL® fiber is a registered trademark of INVISTA and is used under license to NILIT for nylon fiber products.



Ornamental medieval emblems adorn high-performance training wear with retro elegance.

## YARN CLOSE-UP

For the top, the sophisticated tone-to-tone effects are created from TACTEL® soft black fiber and NILIT® Aquarius yarns. The pants are created from TACTEL® soft black fibers and spandex covered with NILIT® Aquarius .

# BALANCING ACT

Create the perfect balance between function and style using NILIT® EcoCare recycled yarn.



Seamless solutions for energetic dance wear offer colorful co-ordinates with built-in support.

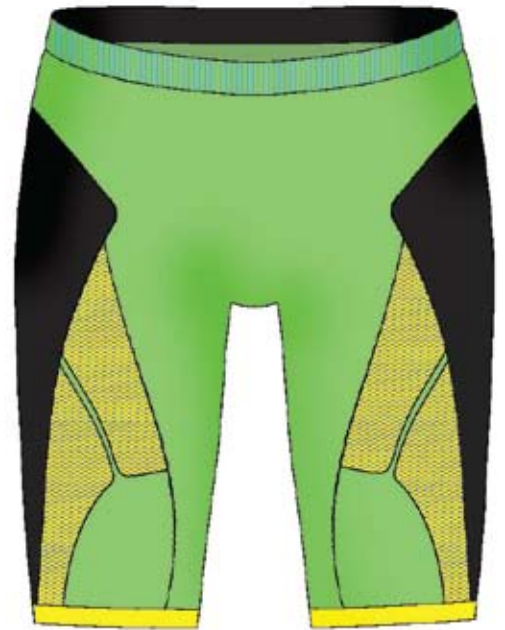
## YARN CLOSE-UP

The striking colors and soft handle are created from NILIT® EcoCare yarn and spandex covered with NILIT® Pastelle.



# SHAPE UP

State-of-the-art seamless gym wear artfully combines innovation with style by using NILIT® Aquarius yarn.



Trendy seamless activewear creates a bold statement of style and sensuality.

## YARN CLOSE-UP

The bold multi-colored effects are created with TACTEL® soft black fiber and NILIT® Aquarius and covered spandex.

TACTEL® fiber is a registered trademark of INVISTA and is used under license to NILIT for nylon fiber products.





# JOIN THE TEAM

NILIT® special performance yarns provide the perfect synergy between functionality and design.



For team sports, the emphasis is on bodywear that is both performance enhancing and protective.

## YARN CLOSE-UP

For the top, the essential protective properties are created from NILIT® Bodyfresh yarn (inside) and NILIT® Aquarius yarn (outside). The pants are created using NILIT® Aquarius and spandex covered with NILIT® Bodyfresh yarn.



A woman with long blonde hair, wearing a bright pink off-the-shoulder top and a black leather jacket, is posing in a graffiti-covered urban environment. She is looking down and to the side with a slight smile. The background features colorful graffiti in shades of blue, purple, and pink. The overall mood is vibrant and energetic.

21:00

Barcelona

Experience the thrill of each  
moment to reach your goal



# Metropolitan

**This dynamic trend focuses on protection and safety from extreme elements** with special emphasis on high performance, functionality and support. Extreme sports take root in the city and the lure of sports such as skateboarding and freeride biking provide a dynamic challenge.

**Technically sophisticated products derive inspiration** from the urban environment with shapes that are robust and structured. Ergonomically designed seamless garments enhance the body's performance under strenuous conditions and placed compression zones and textured panels offer added support.

**Activewear combines the codes of high performance with yarn technologies** and skillfully-engineered cuts which provide freedom of movement and perfect fit. Garments are equipped with details designed for urban action with pockets for tools or mp3 players and sections that zip off if desired for added ease of movement.

**Angular cuts incorporate geometric shapes** in steely metallic colors which contrast with sharp bright neon trimmings. Unusual combinations with bi-color effects add pizzazz and provide added definition to body contours. Deep uniform colors are created using NILIT® EcoCare recycled yarns which are in synch with the global awareness of eco-friendly processes.

# Cycle Graffiti

Make a bold statement in cycle wear made from NILIT® Pastelle yarns.

19-4030

17-1831

15-4502

17-0205

18-0312

13-0858

18-0920

17-4421



Cycling gear merges function with a grunge graffiti design contrasted with striking red accents.

## Yarn close-up

The tone-to-tone mottled effect is created from NILIT® Aquarius and NILIT® Pastelle yarns.

# Cross Training

For freedom and comfort, NILIT® Aquarius yarn artfully combines innovation with style.



For cross training, activewear features textured panels and placed compression zones to maximize support.

## Yarn close-up

For the top, superb protective qualities of moisture management and anti-bacteria are created from NILIT® Bodyfresh yarn for the inner layer, and NILIT® Aquarius together with NILIT® Pastelle yarn. The pants are made from NILIT® Aquarius and spandex covered with NILIT® Bodyfresh.



# Fitball

Create striking two-tone effects using NILIT® Pastelle yarns.



Positive/negative effects highlight a sensational mix-and-match story of multipurpose activewear.

## Yarn close-up

The striking contrast colors are created from NILIT® Aquarius and NILIT® Pastelle yarns and bare spandex.

# Leader of the Pack

High-energy fitness wear is created from NILIT® EcoCare recycled yarns.



Multi-functional fitness wear is inspired by animal motifs which create a fun look with a sporting spirit.

## Yarn close-up

The soft handle and striking colors are created from NILIT® EcoCare yarns and spandex covered with soft black yarn made with TACTEL® fiber.

TACTEL® fiber is a registered trademark of INWISTA and is used under license to NILIT for nylon fiber products.





# NILIT<sup>®</sup> Yarn Guide

BodyFashion & Active-Sports. Spring - Summer 2011

NILIT<sup>®</sup>'s unique and diverse products continue to contribute creativity and versatility to the world of bodywear. NILIT<sup>®</sup> nylon 6.6 yarns are offered in a variety of yarn counts, several layers of luster and different cross-sections.

Thanks to its dedication to Research and Development and due to the exceptional properties of its yarns, NILIT<sup>®</sup> has reaffirmed its strength as a market leader with an ever more decisive presence. NILIT<sup>®</sup>'s innovative yarns all perfected for seamless, circular knitting and wovens, guarantee top-level performance and continue to open new frontiers for bodywear, activewear and apparel that demands specific technical performance. In addition to NILIT<sup>®</sup>'s in-house brands, the expanded portfolio of specialty products include TACTEL<sup>®</sup> fiber, as well as SUPPLEX<sup>®</sup> and CORDURA<sup>®</sup> fabrics which are INVISTA trademarks used under license to NILIT<sup>®</sup>.

NILIT<sup>®</sup>'s customized yarn solutions open up endless new possibilities for manufacturers to create state-of-the-art products that are both fashionable and innovative.

**NILIT<sup>®</sup>** Fibers

supplex<sup>®</sup>  
BRAND

**CORDURA<sup>®</sup>**  
F A B R I C

**Tactel<sup>®</sup>**  
BRAND

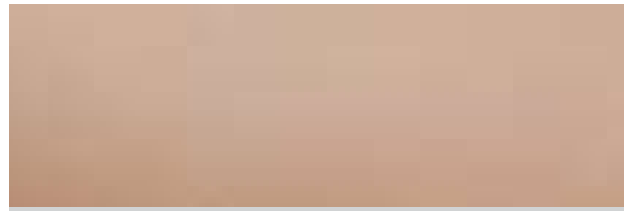
TACTEL<sup>®</sup> fiber, SUPPLEX<sup>®</sup> fabric, and CORDURA<sup>®</sup> fabric are registered trademarks of INVISTA and are used under license to NILIT for nylon products.





### NILIT® EverSheer

- Highly durable fibres that cover and protect spandex
- Highly uniform, “leg and body hugging,” sheer appearance with no loose filaments – free from picks and snags



### NILIT® Breeze

- Highly transparent, 4-filament flat yarn with a low denier
- Super-Dull polymer and flat cross-section creates soft touch and provides superior ventilation



### NILIT® Colorwise

- Unique high-dye uptake rate results in very deep, rich shades of colour in one-step dyeing process
- Range of “tone to tone” colour shades
- Excellent for jacquards, stripes and other fashion effects



### NILIT® Pastelle

- With Colorwise: Two contrasting colours in one-step dyeing process
- With regular nylon 6.6: range of colour shades in one-step dyeing process
- Perfect for multicoloured fabrics in different designs and patterns



### NILIT® Brillion

- Bright, flat yarns-round, trilobal, and oval cross-sections
- Exceptionally smooth, soft hand and unique lustrous appearance



### NILIT® Arafelle

- Heather-effect yarns from textured fibres
- Cotton-like feel and appearance
- Melange effect in one-step dyeing process



### NILIT® Duelle

- Melange effect with Colorwise & Pastelle yarns
- Two distinct colours and deep contrast shades in one dyeing process



### NILIT® BodyFresh

- Antibacterial properties inside the polymer prevent bacteria that cause body odour
- Highly resilient, flexible and durable, handles well



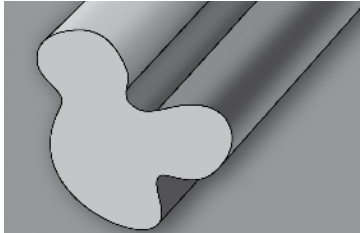
### NILIT® Microsilik

- Extra soft feel for a “second skin” effect
- Flat and textured yarns in a number of lustres and dtex levels



### NILIT® Britex

- Uniquely bright, textured yarns that can be knitted with or without spandex
- Soft to the touch, single- or two-ply yarns that drape well



### NILIT® Aquarius

- Moisture management properties are built into the fiber - will not disappear even after repeated washings
- Triple T cross-section increases the surface area for improved moisture management
- Special micro-channels in the fiber actually carry moisture away from the body



### NILIT® EcoCare

- No variability in properties of recycled yarn
- Excellent color depth & uniformity in regular dye process
- Environmental friendly process

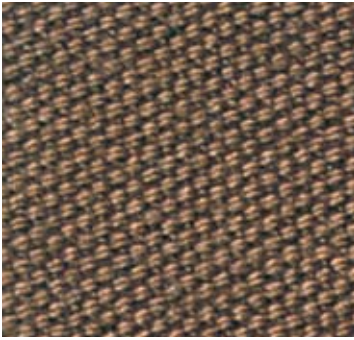


### SUPPLEX® fabric

- With the advantages of high-tech fibres and the natural beauty of cotton
- Delivers fabrics that have an exceptionally smooth, natural hand, and dry faster than cotton.
- Garments can be worn repeatedly without compromising their fresh, stylish appearance. And they stay soft even after repeated washings.

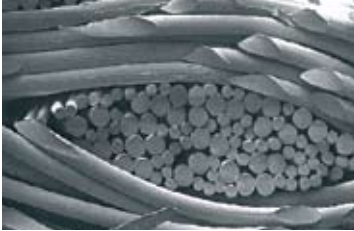
### SUPPLEX® UPF fabric

- Addresses the growing demand of today’s consumers for UV protection in their garments.
- Has permanent protection due to the intrinsic UPF protection qualities, which stay in the fabric even after repeated washings.
- Certified SUPPLEX® UPF fabrics deliver very high UV protection - SPF 40 and higher- depending on the fabric and fabric construction.



### CORDURA® fabric

- CORDURA® fabric is designed for living and built to last, providing exceptional resistance to tears, scuffs and abrasions.
- Abrasion resistant CORDURA® fabric combines performance with versatility, so it can move effortlessly from motorcycle apparel to casual comfort.
- Brings all of the benefits of lightweight fabrics, but with exceptional durability.



### TACTEL® multisoft fiber

- Highly diverse multi-filament yarn range - shiny bright to fully dull - and drapes
- Round or trilobal cross-section
- Can be produced with surface effects that are soft and versatile



### TACTEL® micro touch fiber

- A super-soft, luxurious hand (flat or textured), extra bright to full-dull lustres
- Ultrafine filaments in a range of 0.9-1.3 DPF for extra softness



### TACTEL® micro touch fiber

- A super-soft, luxurious hand (flat or textured), extra bright to full-dull lustres
- Ultrafine filaments in a range of 0.9-1.3 DPF for extra softness



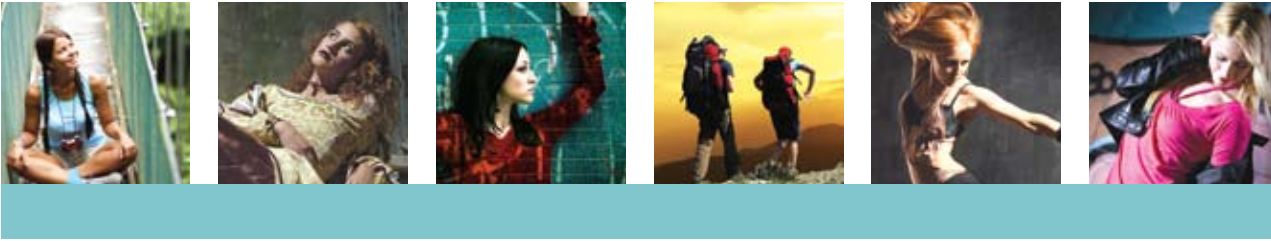
### TACTEL® soft black fiber

- A very deep black with a very light touch - a soft spun-dyed yarn
- Exceptional colour fastness – stays full black for the life of the garment
- Overdye and patterning effects such as heathering and marl



### TACTEL® strata fiber

- Two-tone colour effect in one yarn
- Reproducible effect across all shades – even blacks and highly vibrant colours
- Single-bath dye process



# NILIT® Fibers

To learn more about what NILIT® can do for you, contact your nearest NILIT® representative.

## Headquarters - Nilit Ltd.

Maurizio Levi Rd.  
P.O. Box 276, Ramat Gabriel  
Migdal Haemek, 23102 Israel  
Tel: + 972 4 654 4634  
Fax: + 972 4 654 4636  
E-mail: odedb@nilit.com

## Nilitalia S.R.L.

Via Toscana 6/8  
46042 Asola, Italy  
Tel: + 39 03 76712011  
Fax: + 39 03 76711056  
E-mail: cupiam@nilit.com

## Nilit America Corp.

6903 International Drive  
Greensboro, NC 27409 USA  
Tel: +1 336 605 1962  
Fax: +1 336 605 1951  
E-mail: mollyk@nilit.com

## Nilit Germany GmbH

Industriestrasse 1  
76684 Oestringen, Germany  
Tel: +49 7253 912437  
Fax: +49 7253 912966  
E-mail: lisa.dolde@nilit.com

## Nilit France S.A.

Tour Credit Lyonnais  
129 Rue Servient  
69431 Lyon, Cedex 3  
France  
Tel: +33 478 63 64 65  
Fax: +33 478 60 45 94  
E-mail: thierry@nilit.com

## Nilit Latin America

Rua Wanderley 631  
Apto 61  
CEP 05011-000  
Sao Paulo, Brazil  
Tel: +55 11 3338 1606  
Fax: +55 11 2232 448  
E-mail: pedrok@atglobal.net

## Nilit Nylon Technologies (Suzhou) Co., Ltd.

No. 151 Song Bei Road  
Suzhou Industrial Park  
Jiangsu Province 215024  
P.R. CHINA  
Tel: 86 512 8816 5688  
Fax: 86 512 8816 5634  
E-mail: yu@nilit.com

[www.nilit.com](http://www.nilit.com)

COLLECTION DESIGN & CONCEPTS: ILANA JOSELOWITZ dovg@netvision.net.il



TACTEL® fiber, SUPPLEX® fabric, and CORDURA® fabric are registered trademarks of INVISTA and are used under license to NILIT for nylon products.

The Pantone® colors printed in the NILIT® TrendBook may not match the exact Pantone® standards. Please refer to the current Pantone® colorsystem for accurate standards.

